

# *Narayana Wind Power Pvt.Ltd.*

*(ISO 9001:2015, ISO 14001:2015 & ISO 45001:2018)*



**For all your needs**

**in wind energy anywhere in the world...**

# NARAYANA WIND POWER PRIVATE LIMITED



- Founded in the year 2007 by Mr.Sundararajan
- Well structured Windmill solution providers from India working in different countries.
- 17 plus years of rich expertise with excellent Technology, Infrastructure, well qualified Engineers and Technicians with handful of experience
- Crane-less De & Re erection of all WTG parts, LIFTECH is our cutting edge technology.
- Our company is a QMS certified ( ISO 9001 : 2015, ISO 14001 : 2015, & ISO 45001 : 2018) company having specialized solutions and Functional divisions which makes it as the one stop solution to all issues pertaining to Wind Turbines of various established models.

who  
**WE** are



# NARAYANA WIND POWER PRIVATE LIMITED



VISION

Customers are our partners. Our service is to add value and enable customers to reap the best out of their Assets at least cost and win together.



MISSION

Continuous stride towards Innovative ideas to ease operation & minimize cost to create a win-win situation



VALUES

- ✓ Committed to Excellence
- ✓ Open to new Ideas & Technologies
- ✓ Loyal to Customers & All stakeholders
- ✓ Ethical business practices
- ✓ Add value and give it back from where we earn.

# Our Business Verticals



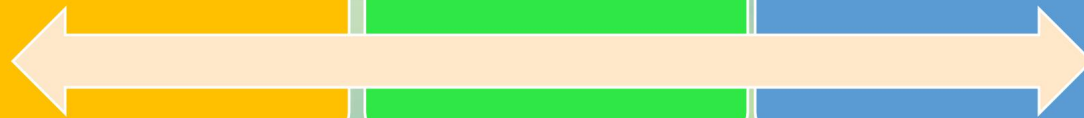
LIFTECH –  
CRANELESS  
TECHNOLOGY



GEARBOX  
SALES &  
SERVICE



OPERATION &  
MAINTENANCE



# LIFTECH

## A CRANELESS LIFTING TECHNOLOGY



De-erection and re-erection of major Nacelle parts **without any crane**

**The components can be,**

- ✓ Gear box,
- ✓ Generator,
- ✓ Main Bearing housing,
- ✓ Single blade
- ✓ Rotor &
- ✓ a whole **Nacelle** too

All these crane-less technology systems are being designed by our own team.

We have been working on this technology since 2008. At present, we make use of this Technology for the WTG capacity ranging from 225 Kw to 1.65 MW and are currently working on developing this technology to cater services for 3+ MW capacity windmills.

## MBH Work In Vestas RRB V47 600 kW Rotor

### Challenges:

- Not enough space for using crane & to place the rotor on ground.
- Due to Heavy Rain, it was not possible to **bring hydra too**.

### Solution given by NWPPL:

We parked the Rotor in the middle of Tower

Completed the work without any **disturbance to the farmers**



# NARAYANA WIND POWER PRIVATE LIMITED



## Nacelle Replacement Of Vestas RRB V47 600 kW

The only service provider done this as of today

Special solution for entire V47 Nacelle lifting:

Limitation:

- Other service providers were not ready to do the job.
- They hesitate due to higher weight & lack of experience

Solution by NWPPL:

- De-erected & Re-erected the **complete Nacelle without any Crane support.**



# NARAYANA WIND POWER PRIVATE LIMITED



## De-Erection of Winwind – 1 MW Rotor & Gear box

WIN WIND 1 MW

WIN WIND 1 MW

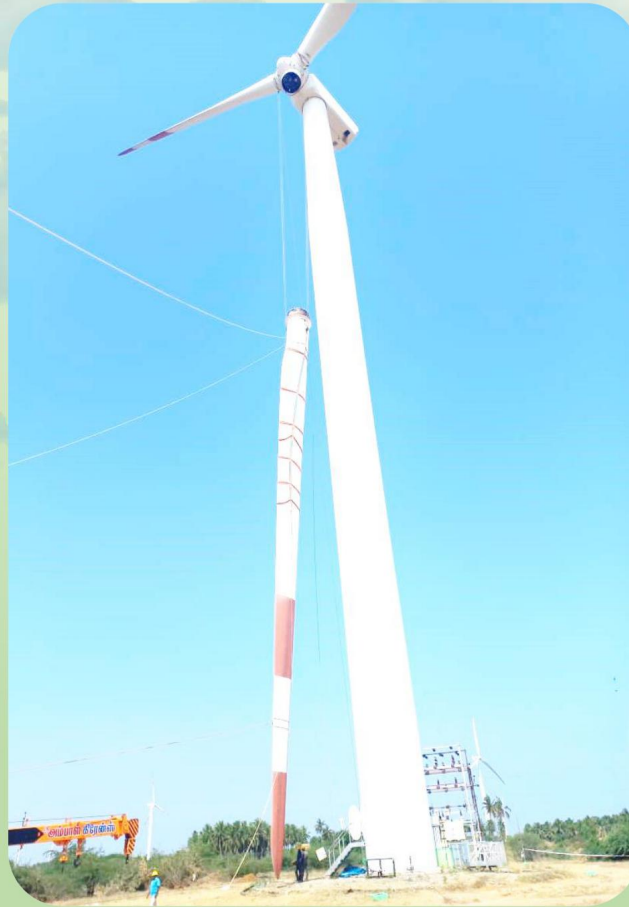




# NARAYANA WIND POWER PRIVATE LIMITED



## De & Re-erection of Suzlon -1.5 MW Blades



# NARAYANA WIND POWER PRIVATE LIMITED



## Blade pitch bearing replacement work in GE 1.6 MW WTG



## De & Re-erection of Vestas V82 - 1650 kW Blades



1.65 MW VESTAS V82 BROKEN BLADES  
POSITIONING & DE-ERECTION



POSITIONING & DE-ERECTION  
1.65 MW VESTAS V82 BROKEN BLADES

# NARAYANA WIND POWER PRIVATE LIMITED



## De & Re-erection of Vestas V82 - 1650 kW Generator



# NARAYANA WIND POWER PRIVATE LIMITED



## De & Re-erection of Vestas V82 - 1650 kW Gearbox



# NARAYANA WIND POWER PRIVATE LIMITED



## De & Re-erection of Vestas V82 - 1650 kW Nacelle Cover



# NARAYANA WIND POWER PRIVATE LIMITED



## De & re erection of Gearbox in V82 WTG- ( Without de erection of Blades)

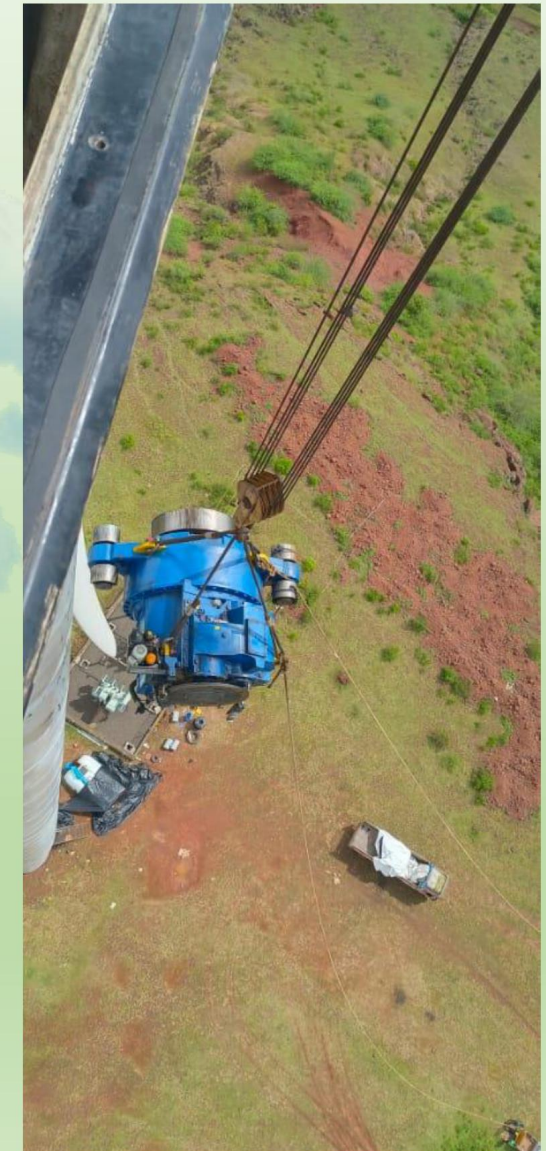
Special solution for Gearbox replacement work in V82 WTG

Limitation:

- Less space for placing the rotor on Ground

Solution by NWPPL:

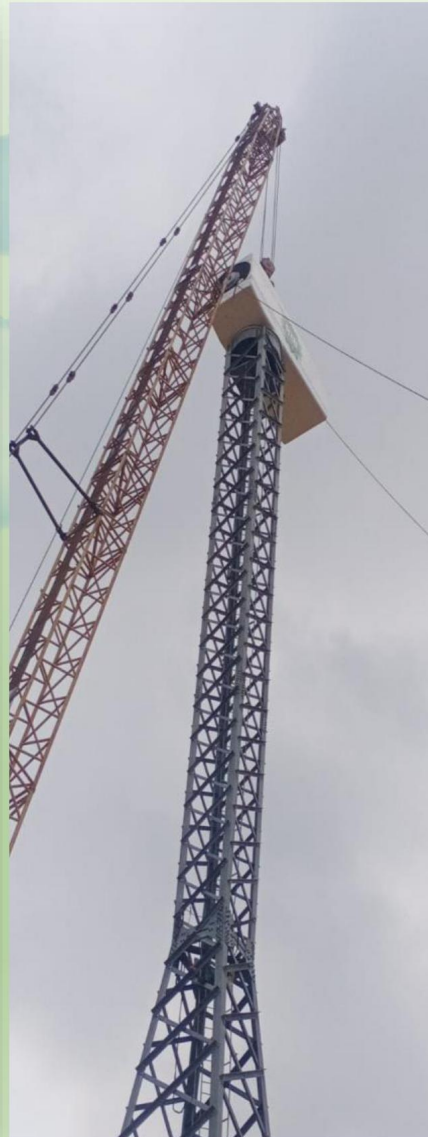
- NWPPL took the challenge
- De-erected & Re-erected the **Gearbox without disturbing the blades & Rotor assembly.**



# NARAYANA WIND POWER PRIVATE LIMITED TURNKEY PROJECT- V47 WIND TURBINE



## Concept to Commissioning



The Turnkey project of Wind Mill Commissioning.

### Scope of work:

All the activities for the wind mill project. It includes,

- Land & Load Procurement
- Statutory Compliances followup
- Erection
- Commissioning
- Operation & Maintenance.



# NARAYANA WIND POWER PRIVATE LIMITED TURNKEY PROJECT- V47 WIND TURBINE

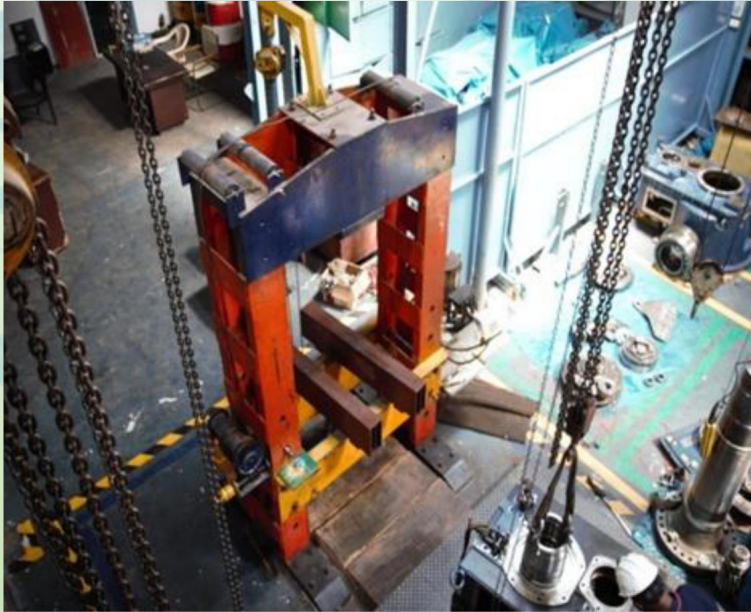


## ERECTION USING CRANES



**NARAYANA WIND POWER PRIVATE LIMITED**

# **GEAR BOX SALES & SERVICE**



- Supply new & refurbished gearboxes ranging from 225KW to 2 MW
- Gearbox Service Centre In 5000 Sq Ft Area
- Servicing Gearboxes of 2+ MW

**NARAYANA WIND POWER PRIVATE LIMITED**

**1.65 MW GEAR BOX SERVICE**



## GEAR BOX SERVICE TO OEMs



- OEM Identified NWPPL as capable for challenging works
- Provided a 2 MW gearbox assembly to detach the gearbox from mainshaft assembly
- Our technical team with experienced leaders completed the job successfully
- without damage to any parts of this assembly.
- Due to the higher rate of satisfaction, now we are getting repeated orders from OEMs.

## Blade bearing Service



- Doing service ranging from 500 KW to 1.5 MW
- Having facility for blade bearing service upto 3 MW



**NARAYANA WIND POWER PRIVATE LIMITED**



**Main Bearing Service**  
(ranging from 500 KW to 1.65 MW)



### Current Status

- ❖ Total Capacity -100 + MW
- ❖ Range – 225 KW to 1650 Kw
- ❖ Make – Almost all models available in India
- ❖ No of technical manpower – 150+
- ❖ Type of service:
  - AMC- Annual Maintenance Contract,
  - AOMC- Annual Operation & Maintenance Contract
  - SCOAMC- Semi Comprehensive Operation & Maintenance Contract
  - COAMC- Comprehensive Operation & Maintenance Contract
- ❖ Site Offices
  - Aralvoimozhy - Kanyakumari District- Tamilnadu
  - Tenkasi - Tenkasi District - Tamilnadu
  - Palladam - Coimbatore District- Tamilnadu
  - Kundur - Davangere District- Karnataka



**NARAYANA WIND POWER PRIVATE LIMITED**

**Operation & Maintenance ( O&M )**



## **Our Unique Approaches**

- ❖ Quicker WEG restoration through the well qualified & experience technical team
- ❖ Maintain optimum machine availability
- ❖ Having separate app for reading updates (**NWP GR**)
- ❖ Systemized response for customers
- ❖ Regular updates about the WEG status to customers.
- ❖ SCADA support will be arranged based on customer requirements



**WHY WITH US**



# NARAYANA WIND POWER PRIVATE LIMITED



## Few of our customers for your reference





# Our Unique Approaches

- ❖ The real - Independent Service Provider
- ❖ One Stop solution
- ❖ Safe & Quality Service
- ❖ Customized & complete solution
- ❖ Hassle free support for representatives & owners



WHY WITH US

# NARAYANA WIND POWER PRIVATE LIMITED



## SOLICITATION

With this, We would like to thank you for the wonderful opportunity given to us to present ourselves to you on our capabilities especially in Crane-less De & Re-erection.

We hope that our capabilities have attained enough of you. With that hope, we solicit your support by offering us an opportunity to work with you being one of the most respected Organizations.

*Thank  
You*



## CONNECT WITH US

EMAIL : Managing Director : [md@narayanawindpower.com](mailto:md@narayanawindpower.com)  
: Business Development Dept. : [mktg\\_mgr@narayanawindpower.com](mailto:mktg_mgr@narayanawindpower.com)

Ph : 9003353556 – Business Development Dept.  
: 9751476586 - Business Development Dept.

WEB : [www.narayanawindpower.com](http://www.narayanawindpower.com)

*Thank  
You*